

CORNERED AUDIO LS2



FEATURES

2x6 1/2" woofer with neo magnet
 2 x 1" horn loaded dome tweeters
 Aluminium cabinet
 Medium to High SPL applications

COLOURS



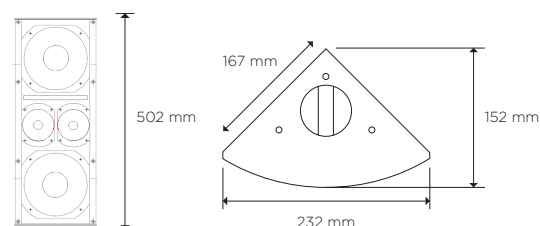
Description

LS2 is a very compact Line Source speaker designed for permanent installation in small to medium sized live applications such as theaters, music clubs and houses of worship. Flying up to 4 pcs per side the LS2 delivers hi-fi like sound quality in 30 meters distance with minimal listening fatigue and excellent detail and clarity.

Weighing in at less than 8 kg per speaker, LS2 offers very high SPL-to-weight and SPL-to-size ratio. Drive units in the LS2 have been designed by the finest European manufacturers. The 6 1/2" woofer features a strong neodymium magnet with state-of-the-art-cooling and less than 1,8 dB power compression after 8 hours of maximum SPL. The ported cabinet offers additional cooling of the drivers, resulting in minimum power compression.

The closely spaced 1" horn-loaded dome tweeter combines the output of a horn-loaded design with the clarity of a dome tweeter. The extruded aluminium cabinet is well dampened and the triangular shape minimises standing waves inside the cabinet. LS2 offers high quality sound reproduction for applications where top performance is a must. It is designed to be driven actively, using pre loaded settings in the Cornered DSP amplifiers.

DATA



| | |
|-------------------------|--------------------------|
| Power handling, IEC268: | 500 watt |
| Power handling, peak: | 2000 watt |
| Sensitivity, 2,83V/1m: | 96 dB |
| Maximum SPL, long term: | 123 dB |
| Maximum SPL, peak: | 129 dB |
| Frequency response: | 120-20.000 Hz |
| Nominal impedance: | 16 ohm |
| Dispersion: | 90x90 degree |
| Weight: | 7,6 kg |
| Measurement: (HxWxD) | 502x232x167mm |
| Connections: | Screw terminal with link |

CORNERED AUDIO LS2

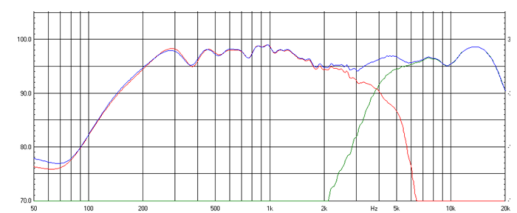
Architectural Specifications

The loudspeaker system shall consist of two 6 1/2" woofers with neo magnet system and two 1" horn loaded tweeter with the voice coil dampened with magnetic oil for improved power handling. The frequency dividing network shall utilize polypropylene capacitors to reduce hysteresis and air coils to reduce compression.

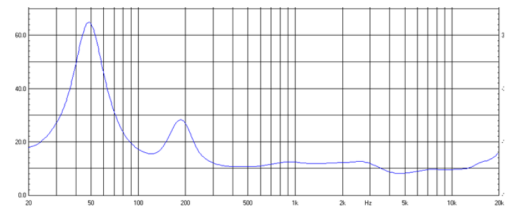
Performance specifications of a typical production shall be as follows:
 SPL at 1 m with 2.83 V input shall be at least 96 dB. Nominal impedance shall be 16 ohms, with minimum impedance being 8,2 ohm @ 4.500 Hz.
 Rated power handling according to IEC 268-5 shall be at least 500 watt.
 Frequency response shall be from 120-20kHz +/- 3 dB. Dispersion shall be 90x90 degree. The enclosure shall be rectangular in shape with no visible cable terminals and with a 90 degree angle. It shall be manufactured of aluminium.

Outside dimensions shall be no greater than 502mm (height) x 232mm (width) x 167mm (side) and weight shall be 7,6 kg.
 The loudspeaker system shall be the Cornered Audio LS2.

FREQUENCY RESPONSE



IMPEDANCE



CORNERED Audio ApS
 Farum Gydevej 65A
 3520 Farum Denmark

Mail info@cornered.dk
 Tel +45 43 66 10 88
 Web www.cornered.dk