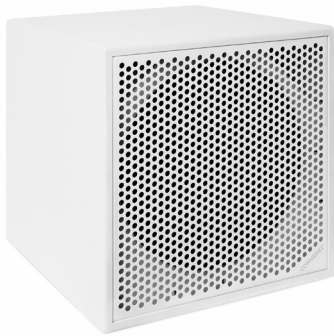


# CORNERED AUDIO C15i



## FEATURES

15" woofer with 3" coil  
 18mm plywood cabinet  
 Bass reflex design  
 2mm steel grille

## COLOURS



## Description

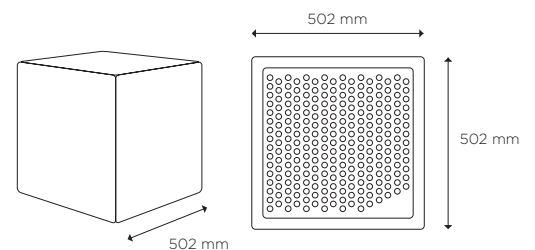
C15i is a subwoofer designed for fixed installation in medium SPL applications. The plywood cabinet features a very rugged and non-reflective paint, recessed dual Speakon NL4 connections and a solid 2mm steel grille and optional rubber feet.

The 15" woofer feature an advanced motor. The cone is carried by an unusually deep profile, double half-roll suspension formed of a linen-like material which is highly resistant to aging and fatigue. The 75 mm Ø aluminum voice coil employs the interleaved sandwich voice coil with windings on both the outer and inner surfaces to achieve a mass-balanced coil.

The results in a linear motor with excellent control.

The magnetic structure has been optimized using FEA CAD resource that maximized the flux density in the voice coil gap. Excellent heat dissipation has also been achieved by incorporating air channels between the basket and the magnetic top plate.

## DATA



Power handling, IEC268:	450 watt
Power handling, peak:	1800 watt
Sensitivity, 2.83V/1m:	96 dB
Maximum SPL, long term:	122 dB
Maximum SPL, peak:	128 dB
Frequency response:	39-900 Hz
Nominal impedance:	8 ohm
Connections:	Dual Speakon NL4 with link
Measurement:	502x502x502mm
Weight:	29 kg

---

# CORNERED AUDIO C15i

---

## Architectural Specifications

The loudspeaker system shall consist of a 15" woofer with a 3" interleaved voice coil and a weather proff cone. The cabinet shall be reflex loaded, made in plywood with recessed Speakon NL4 connections.

Performance specifications of a typical production shall be as follows:  
SPL at 1m with 2.83 V input shall be at least 96 dB. Nominal impedance shall be 8 ohms, with minimum impedance being 6,8 ohm @ 210 Hz. Rated power handling according to IEC 268-5 shall be at least 450 watt.

Frequency response shall be from 39-900Hz +/- 3 dB. The enclosure shall be painted in a non-reflective paint. Outside dimensions shall be no greater than 502 mm (height) x 502 mm (width) x 502 mm (depth) and weight shall be 29 kg. The loudspeaker system shall be the Cornered Audio C15i.

---

CORNERED Audio ApS  
Farym Gydevej 65  
2860 Søborg Denmark

info@cornered.dk  
+45 43 66 10 88  
www.cornered.dk